

MAXIMUM

PERFORMANCE

DEVELOPMENT

MAXIMUM PERFORMANCE DEVELOPMENT

SINCE



1976

42°10'38.0"N



88°15'22.8"W







# 50 YEARS OF MAKING YOUR CAR FASTER THAN THE ONES BEHIND YOU

Founded in 1975, MPD Racing was launched with one purpose: to develop and market the best possible components for Sprint and Midget racers. That vision of creating the best component manufacturing business in the USA remains the core of our mission today. Our continued focus on superior quality and performance, combined with unrivaled customer service, makes MPD Racing the brand of choice for Sprint and Midget race teams around the world.

Today, you can find our products at authorized distributors both across the US and abroad, as well as online at [www.mpd racing.com](http://www.mpd racing.com)









# CONTENTS

SPRINT ..... 6-13

ASPHALT ..... 16-17

MIDGET ..... 18-25

ENGINE ..... 26

TOOLS ..... 27

APPAREL ..... 28

# SPRINT CAR TORSION BARS

## SPRINT CAR TORSION BARS

Made of a high-quality 4340 steel alloy and heat treated to our exacting specifications, our torsion bars have won more Sprint Car championships than all other brands combined. Torsion bars feature 1-1/8" diameter x 48-spline ends, and may be ordered in diameters from 0.925" to 1.065", in both 29" and 30" lengths. Manufactured in the USA with all-American materials.



Part No.	Diameter
30" Torsion Bar with 23" Effective Length	
MPD300925	0.925"
MPD300950	0.950"
MPD300975	0.975"
MPD300987	0.987"
MPD301000	1.000"

Part No.	Diameter
30" Torsion Bar with 23" Effective Length	
MPD301015	1.015"
MPD301025	1.025"
MPD301035	1.035"
MPD301050	1.050"
MPD301065	1.065"

Part No.	Diameter
29" Torsion Bar with 23" Effective Length	
MPD290925	0.925"
MPD290950	0.950"
MPD290975	0.975"
MPD291000	1.000"

Part No.	Diameter
29" Torsion Bar with 23" Effective Length	
MPD291025	1.025"
MPD291050	1.050"
MPD291065	1.065"

## MINI-SPRINT TORSION BARS

Manufactured from the same high-grade alloy steel as the Sprint Car bars, MPD Racing 26" torsion bars are 7/8" diameter x 48-spline. With lightweight hollow construction, torsion bars are available from 0.600" to 0.800" diameter in 26" lengths to provide a range of options for effective wheel rates. Each bar is packaged in a protective tube at no extra charge.



Part No.	Diameter
7/8" x 48-Spline	
MPD26600	0.600"
MPD26625	0.625"
MPD26650	0.650"

Part No.	Diameter
7/8" x 48-Spline	
MPD26675	0.675"
MPD26700	0.700"
MPD26712	0.712"

Part No.	Diameter
7/8" x 48-Spline	
MPD26725	0.725"
MPD26737	0.737"
MPD26750	0.750"

Part No.	Diameter
7/8" x 48-Spline	
MPD26775	0.775"
MPD26800	0.800"

# SPRINT CAR TORSION BARS

## STORAGE TUBE MPD99700

The same tube used to protect MPD torsion bars during storage or transport may also be purchased separately. Protective tube is 1-1/2" diameter x 16-3/4" long and weighs just 0.20 lbs.

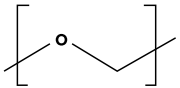
## TORSION BAR BUSHINGS

Torsion bushings are 1-1/8" I.D. x 0.095" thick. Performance-tested anti-friction material offers increased wear-resistance allowing for longer part life.

Part No.	Description
MPD30104	0.095" Sprint Car-Nylon (4-Pack)
MPD30110	0.095" Sprint Car-Nylon (10-Pack)
MPD30204	0.095" Sprint Car-Bronze (4-Pack)
MPD30210	0.095" Sprint Car-Bronze (10-Pack)

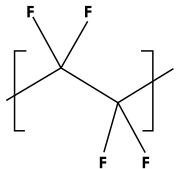
## NYLON BUSHING FEATURES:

### Polyoxymethylene



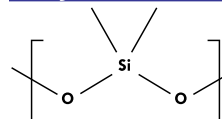
- Less Friction
- Properties Remain Constant
- Humidity High Impact Strength

### Polytetrafluoroethylene



- Improves Abrasion Resistance
- Improves Lubrication

### Polysiloxane



- Improves Weatherability
- Improves Thermal Stability



BRONZE



NYLON

## TORSION BAR SPLINE GREASE MPD30020

Designed to provide top-quality protection for torsion bars and Sprint Car drive lines. It utilizes a high-viscosity synthetic base, proprietary anti-wear additive, and Polyurea thickener that is specifically developed to extend durability.

## SPRINT TORSION BAR RETAINERS

Natural aluminum retainers are engineered specifically for use with MPD Racing 1-1/8" diameter torsion bars, and feature cadmium-plated Grade 8 bolts. Torsion bar retainers are made of black anodized aluminum.



Part No.	Description
MPD30001	Torsion Bar Retainers, Sold in Pairs
MPD30002	Torsion Bar Retaining Caps for 1-1/8" Threaded Bar, Sold in Pairs



## TORSION BAR REAMER MPD30130

Torsion Bar Reamer is manufactured for accuracy. The heart of the Reamer is its 4340 tool steel industrial cutter. Each flute is precision ground for perfect cutting and accuracy. The stem is made to come apart so it's easy to store. Machined at the handle end is a 3/4" hex so you can easily cut through your bushings.

## SPRINT CAR TORSION BAR BUSHING INSTALLERS

This tool makes installing torsion bar bushings quick and easy. A must for every toolbox, it also helps prevent bending or cracking the bushing flange during installation.

Part No.	Description
MPD30140	1.125"
MPD30142	1"
MPD30144	7/8"





# SPRINT CAR DRIVE LINES

## TORQUE BALL HOUSING MPD68200

Machined from black anodized billet aircraft aluminum, these 4.45" torque ball housings are the strongest torque ball housings on the market! It is the only housing on the market that pivots in the same linear pattern as the U-joint, letting your car drive harder and roll freer.



## ALUMINUM TORQUE TUBES

MPD anodized aluminum torque tubes are turned to 2.990" O.D. and reamed to 2.628" I.D. to ensure 0.005" clearance between the torque ball and torque tube. Tubes are available in 27", 28", 32", and 35" lengths. The torque collars have been lightened with a ball mill to decrease weight. All torque tube assemblies are supplied with an O-ring.

Part No.	Description	Color	Matching Components
MPD64628	28"	Black	MPD64205, MPD64202
MPD64632	32"	Black	MPD64205, MPD64202
MPD64635	35"	Black	MPD64205, MPD64202
MPD64650	Heavy Duty, Long Collar, Black, 28"	Black	MPD64205, MPD64202
MPD64601	27", 3" O.D.	Black	MPD64203



## TORQUE BALLS

MPD Torque Balls are machined out of solid aluminum billet and are hard anodized to keep from binding.

Part No.	Description	Matching Components
<b>4.45" Ball Diameter</b>		
MPD64202	2.995" I.D. Long Ball	MPD68200
MPD64203	3.005" I.D. Standard Ball	MPD68200
MPD64205	2.995" I.D. Standard Ball	MPD68200





# SPRINT CAR DRIVE LINES

## SPRINT CAR AXLE SPACER KIT **MPD87200**

MPD Racing's axle spacer system uses a split cone spacer which allows moving the wheel in or out without going back to look for the right size spacer. Once the spacing is correct, simply move the existing spacers from the inside of the wheel to the center of the split cone or vice versa. Kit includes male cone for the wheel center and female cone for the wheel nut, (2) 1/4" and (4) 1/2" spacers. Some cars may require an additional spacer between the system and the birdcage. Black anodized aluminum. Made in the USA.

Part No.	Description
<b>Extra Spacers for Kit</b>	
<b>MPD87201</b>	Male Cone - Sold Each
<b>MPD87202</b>	Female Cone - Sold Each
<b>MPD87203</b>	Male/Female Kit
<b>MPD87009</b>	1/2" Wide - Sold Each
<b>MPD87015</b>	1/4" Wide - Sold Each
<b>MPD87007</b>	7/8" Wide, Tapered - Sold Each
<b>MPD87008</b>	7/8" Wide, 42-Spline - Sold Each



## REAR AXLE NUT

Black anodized aluminum rear axle nuts for sprint cars. 2-1/2" threads with a 3" wrench size.

Part No.	Description
<b>MPD85001</b>	Left-Hand Thread
<b>MPD85002</b>	Right-Hand Thread



## SHIFT LEVERS

Our lightweight shift levers have a positive lock system to securely lock the car into gear. Spring-loaded lever locks into place in either the "in" or "out" position. The black anodized shift lever is offered in both a weld-on or clamp-on style.

Part No.	Description
<b>MPD84000</b>	Shift Lever - Weld-On
<b>MPD84000C</b>	Shift Lever - Clamp-On
<b>MPD84010</b>	Clamp for Push-Lock Shifter Cable
<b>MPD84001</b>	Shifter Installation Kit, Weld-On Bracket
<b>MPD84015</b>	Shifter Installation Kit, Cable Tab / Weld-On Bracket
<b>MPD84020</b>	Cable - Complete with Ends and Ready to Install



## STEEL TUBULAR DRIVESHAFTS

Made with tough 4130 steel, then gun drilled to reduce weight, MPD Racing tubular driveshafts feature 10-spline ends.

Part No.	Description
<b>MPD65104</b>	28" Long, 10/16 Spline, Hollow Steel
<b>MPD65106</b>	29" Long, 10/16 Spline, Hollow Steel
<b>MPD65108</b>	32" Long, 10/16 Spline, Hollow Steel

## SPRINT CAR INNER REAR WHEEL COVER

This splined black anodized aluminum inner rear wheel cover fits a 15" diameter wheel. These slide-on splined inner mud covers prevent mud and debris from collecting in the inner wheel.

Part No.	Description
<b>MPD87300</b>	Right Cover
<b>MPD87302</b>	Left Cover



# SPRINT CAR TETHERS

## SPRINT CAR FRONT AXLE TETHER SYSTEM

Approved for use by Knoxville Raceway and the WoO (World of Outlaws), front axle tether system adds a measure of safety to open wheel racing in the event of front axle breakage. Clamps install easily to front axle, and tethers are then connected to the front motor mount tube. Kits include (2) billet clamps, (2) tethers, and required hardware. Tether, clamp, and hardware kits are also available separately for replacement purposes, or for spare front axles.



Part No.	Description
<b>MPD10500</b>	Axle Tether Pair with 2.5" Clamps
<b>MPD10501</b>	Axle Tether Pair with 2.38" Clamps
<b>MPD10502</b>	Axle Tether Pair with 2.25" Clamps
<b>Replacement Clamps</b>	
<b>MPD10525</b>	Axle Clamp Pair 2.5" with Hardware
<b>MPD10526</b>	Axle Clamp Pair 2.38" with Hardware
<b>MPD10527</b>	Axle Clamp Pair 2.25" with Hardware
<b>MPD10528</b>	Axle Clamp Hardware Only



MPD10500

## KING PIN TETHER KIT

King pin tether from MPD Racing is required by World of Outlaws and many other Sprint Car sanctioning bodies and tracks. It attaches to the king pins so that they will remain with the race car in the event of a crash.

Part No.	Description
<b>MPD10506</b>	For 50" Axle, King Pin Tether with Hardware
<b>MPD10507</b>	For 51"-53" Axle, King Pin Tether with Hardware
<b>MPD10508</b>	56" King Pin Tether with Hardware
<b>MPD10510</b>	King Pin Studs Pair



MPD10510



# SPRINT CAR FRONT END



## LIGHTWEIGHT SPRINT HUBS

These billet direct-mount hubs are machined from 6061-T6 aluminum for superior precision and strength. Kit includes left hub with rotor mount, right hub without rotor mount, bearings, seals, wheel nuts, and dust cap.

Part No.	Description
<b>MPD28500</b>	Complete Kit, Includes Right and Left Sides
<b>MPD28510</b>	Direct-Mount Billet Hub, Left Side Only, Complete
<b>MPD28512</b>	Direct-Mount Billet Hub, Right Side Only, Complete
<b>Replacement Components</b>	
<b>MPD28515</b>	Hub Bolt Kit, 3/8-16" Thread, 1.250" Long, Titanium
<b>MPD28524</b>	Wheel Bearing Kit, Outer Bearing
<b>MPD28526</b>	Hub Bearing Seal, Inner, Lip, 2.645" O.D., 1.6" I.D., 0.253" Thick, Rubber / Steel
<b>MPD28528</b>	Hub Bolt Kit, 3/8-16" Thread, 1" Long, Steel



## SPRINT SPINDLES

Sprint car spindles are manufactured using a 7075-T6 aluminum forging and are offered with titanium or steel snout and include lock nuts.

Part No.	Description
<b>MPD14000</b>	Spindle with Steel Snout, 2 Ear
<b>MPD14010</b>	Spindle with Titanium Snout, 2 Ear

## SPINDLE NUT & SHIM KITS

Part No.	Description
<b>MPD14201</b>	Sprint Spindle Thrust Bearing, Pack of 4
<b>MPD14202</b>	0.030" Thrust Washer, Pack of 4
<b>MPD14203</b>	King Pin Thrust Bearing, Roller, Steel, Kit
<b>MPD14204</b>	0.005" Shim, Pack of 10
<b>MPD14205</b>	0.007" Shim, Pack of 10
<b>MPD14206</b>	0.010" Shim, Pack of 10
<b>MPD14207</b>	0.015" Shim, Pack of 10



MPD14203

## HUB BEARING SPACER MPD13607

Bearing spacers feature a patented design that improves wheel spin by 1200% and reduces bearing maintenance and wear. Threaded adjustment makes setting end play or preload easy.



## LOW-DRAG SEALS MPD25605LD

Upgrade your performance with TFE low-drag seals.



## SPINDLE REPLACEMENT PARTS

Part No.	Description
<b>MPD14001</b>	King Pin, 5/8", Steel
<b>MPD14011</b>	King Pin, 5/8", Titanium



## KING PINS AND CAPS

Part No.	Description
<b>MPD14305</b>	Steel Spindle Nut, Keyed Washer / Screws Included
<b>MPD28456</b>	Standard Cap



MPD14305

# SPRINT CAR COMPONENTS

## SPRINT CAR BIRDCAGES

These black anodized billet aluminum birdcages are complete with angular contact bearing, torsion arm bolt, and radius rod bolt. 5-1/4" split between radius rod and torsion arm. Left and right sold individually.

Part No.	Description
<b>MPD81107</b>	Passenger Side, 2.750" I.D. Bearing, Single Bearing, Aluminum
<b>MPD81207</b>	Driver Side, 2.750" I.D. Bearing, Single Bearing, Aluminum
<b>Replacement Components</b>	
<b>MPD81101</b>	Birdcage Flag, Aluminum, Black Anodized
<b>MPD81102</b>	Birdcage Spud, Aluminum
<b>MPD81103</b>	Birdcage Bolt, Lower Arm, 1/2"-20 Thread, 4" Long, Hex Head, Steel
<b>MPD81104</b>	Birdcage Bolt, Radius Rod Bolt, 1/2"-20 Thread, 3-1/4" Long, Hex Head, Steel



## SPRINT CAR STEERING ARMS

Steering arms are CNC-machined from 202 aluminum. Black anodized finish. Sold each.

Part No.	Description
<b>MPD17708</b>	Driver Side, 8-3/16" Center to Center, Aluminum
<b>MPD17608</b>	Passenger Side, 5-1/2" Center to Center



## PITMAN ARMS

MPD offers a variety of different styles of Pitman arms to make sure you get the correct feel of the race car.



## CONE SPACERS

Part No.	Description	Weight
<b>MPD41000</b>	Cone Spacer Plain	.01
<b>MPD41002</b>	Cone Spacer Black	.01
<b>MPD41005</b>	Cone Spacer, Set of 10, Plain	.10
<b>MPD41006</b>	Cone Spacer, Set of 10, Black	.10



Part No.	Description
<b>MPD28340</b>	Pitman Arm, Straight, Black, 10" and 11" holes
<b>MPD28345</b>	Pitman Arm, Angle Broach, Black, 10" and 11" holes
<b>MPD28360</b>	Pitman Arm, Straight, Long, Black, 11.25", 12.25", 13.25", and 14.25" Holes
<b>MPD28365</b>	Pitman Arm, Angle Broach, Long, Black, 11.25", 12.25", 13.25", and 14.25" Holes



# SPRINT CAR COMPONENTS



## BILLET ALUMINUM FRONT TORSION ARMS

Precision-machined from high-strength 7075 billet aluminum, these torsion arms are engineered to deliver maximum durability and performance. By reducing deflection, twisting, and bending under load, they ensure the torsion bar maintains a consistent rate without energy being lost to flex in the arm. Ideal for both winged and non-wing sprint cars, these arms provide the strength and stability serious racers demand.

Part No.	Description
<b>MPD82030</b>	7075 S-Bend Left Front, Black
<b>MPD82032</b>	7075 Straight Right Front, Black

## SPRINT CAR TORSION ARMS

MPD torsion arms are constructed of high-strength 2024 aluminum. The arms have been precisely radiused to reduce excess weight while maintaining strength and durability. The left S-Bend allows for more oversteer clearance on the left front tire.



Part No.	Description
<b>MPD82000</b>	Front, Driver Side, 1-1/8" x 48 Spline, 19-1/2" Long
<b>MPD82004</b>	Front, Driver Side, S-Bend, 1-1/8" x 48 Spline, 19-1/4" Long
<b>MPD82006</b>	Front, Passenger Side, 1-1/8" x 48 Spline, 17-1/2" Long
<b>MPD82010</b>	Rear, Driver Side, 1-1/8" x 48 Spline, 16-1/4" Long
<b>MPD82014</b>	Rear, Passenger Side, 1-1/8" x 48 Spline, 15-3/8" Long

## FRONT ROTOR MOUNTING KIT MPD1790K

Front rotor mounting kits include 3 stands with bolts. Stands have 1/2"-20 threads through and include 1/2"-20 flathead Allen bolts. One Per Hub. 0.29 lbs.



## PAVEMENT HUB LUG NUTS MPD12400

Aluminum lug nut with 5/8"-11 thread. Sold in packs of three.



## TORSION BAR STOPS

Torsion stops are available in 1-3/4" split. Aluminum stops are made from 6061 and include a steel bolt with jam nut. Steel stops are 4340 and include a steel bolt and jam nut. Titanium stops feature a titanium bolt with aluminum jam nut.

Part No.	Description
<b>MPD17200</b>	1-3/4" Split, Hardware Included, Aluminum, Black Anodized
<b>MPD17210</b>	1-3/4" Split, Hardware Included, Steel, Black Powder Coat
<b>MPD17212</b>	1-3/4" Split, Hardware Included, Titanium, Natural

### Torsion Stop Bolts

<b>MPD17220</b>	7/16-20" Thread, 1.750" Long, Hex Head, Steel
<b>MPD17222</b>	7/16-20" Thread, 1.750" Long, Hex Head, Titanium



## BRAKE ROTORS

All rotors have been drilled and lightened to significantly reduce rotating weight. Rotors are 3/8" thick and are made of 6061-T651 tooling plate. Each rotor is clear anodized to increase durability and extend usable life.

Part No.	Description
<b>MPD17900</b>	Aluminum Brake Rotor-11"
<b>MPD17904</b>	Aluminum Brake Rotor-10"



## MASTER CYLINDER RETURN SPRING MPD17990

Kit includes black anodized aluminum retainer plate and black powder-coated steel return spring.



## SPRINT DRIVE STUDS FOR FRONT HUBS MPD12300

Threaded drive stud, with 5/8"-11 thread on pin and 1/2"-20 thread on shank. Fits bolt-on front hubs. Sold each.



## BRAKE QUICK DISCONNECT MPD28600

MPD Racing has released their new dry-break, quick-disconnect -3 AN fittings. A quarter turn disconnects the line with no tools needed. The internal high-tension spring-loaded seal provides a positive lock between ends preventing air from entering and fluid from escaping.









# ASPHALT SPRINT CAR



## 6-PIN ORIGINAL HUBS MPD13000

Part No.	Description
<b>Replacement Components</b>	
MPD12300	Drive Studs for Front Hubs
MPD12305	Titanium Wheel Stud
MPD12400	Asphalt Hub Lug Nut
MPD1790K	Front Rotor Mounting Kit
MPD13010	Dust Cap For 13000 Hub with O-Ring Mpd Logo
MPD13012	Seal for 13000 Hub
MPD13014	Bearing Kits for 13000 2 Bearings 2 Races



## 6-PIN PRESSURE PLATE

Part No.	Description
MPD16400	Plain
MPD16401	Black



## FRONT BRAKE MOUNT MPD14152

Pavement 4" on 5-1/4"



## ASPHALT SPRINT CAR BIRDCAGES

This state-of-art sprint card birdcage is designed with strength in mind, but still emphasizes weight savings. The 7075 billet aluminum birdcage needs no bolt-on hardware, giving it maximum strength. These cages fit most asphalt cars including beast and hurricane chassis.



Part No.	Description
MPD81120	Left Hand Birdcage
MPD81220	Right Hand Birdcage
<b>Replacement Components</b>	
MPD81270	Pavement Birdcage, 6014 Bearing
MPD81271	Spiral Locking Ring for Pavement Birdcage
MPD81272	Upper Cone Bolt, 2-1/2" Left Rear Pavement Cage
MPD81273	Upper Cone Bolt, 3" Right Rear Pavement Cage
MPD81274	Lower Pickup Bolt, and Nut for Pavement Cage
MPD81275	Upper Pick Up Cone for Left Rear Pavement Cage
MPD81276	Upper Pick Up Cone for Right Rear Pavement Cage



## ASPHALT SPINDLE

Asphalt spindles are manufactured using a 7075-T6 aluminum forging and have stepped steel snouts. Lock nuts included.

Part No.	Description
MPD14100	Black Spindle
MPD14101	Natural Anodized Spindle
<b>Related Components</b>	
MPD14011	Titanium and Add Caps
MPD28458	Long Cap
MPD28456	Standard Cap



# ASPHALT SPRINT CAR



## ASPHALT SPRINT CAR STEERING ARMS

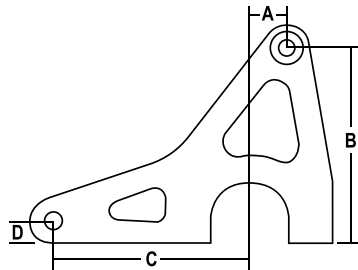
The MPD Racing sprint steering arms are machined from 2024 aluminum, drilled and tapped 1/2" NF for mounting. Available in multiple configurations. Offered in clear or black anodized finish.

Part No.	Description	Weight	Spindle Bolt Center	A	B	C	D
MPD14130	Left	15.5 oz.	3.75"	N/A	N/A	5.5" - 6.125"	1.375"
MPD14132	(Single Mount), LF Single	14 oz.	3.75"	N/A	N/A	6"	1.375"
MPD14135	Right	1 lb. 7 oz.	3.75"	1"	5.5" - 6.25"	5.375" - 6.25"	1.75"
MPD14137	(Single Mount), RF Combo	1 lb. 12 oz.	3.75"	0.375"	6.5"	6.25"	1.375"
MPD14138	Beast Style, Offset	2.45 lbs	3.75"	1"	9.5"	6"	1.75"
MPD14139	Beast Style, Offset	2.45 lbs	3.75"	1"	9.5"	6"	1.75"

## STEERING ARM MEASUREMENT GUIDELINES

Please follow these guidelines for providing correct steering arm dimensions (see corresponding diagram):

A.	Drag-link centerline to kingpin centerline
B.	Drag-link centerline to spindle
C.	Tie-rod centerline to kingpin
D.	Tie-rod centerline to spindle



## ASPHALT AXLE

2.25" outside diameter, 12 degree front spindles.

Part No.	Description
MPD17300	50" Front Axle Assembly
MPD17302	52" Front Axle Assembly

## SPINDLE NUT & SHIM KITS

Part No.	Description
MPD14201	Sprint Spindle Thrust Bearing, Pack of 4
MPD14202	0.030" Thrust Washer, Pack of 4
MPD14203	King Pin Thrust Bearing, Roller, Steel, Kit
MPD14204	0.005" Shim, Pack of 10
MPD14205	0.007" Shim, Pack of 10
MPD14206	0.010" Shim, Pack of 10
MPD14207	0.015" Shim, Pack of 10

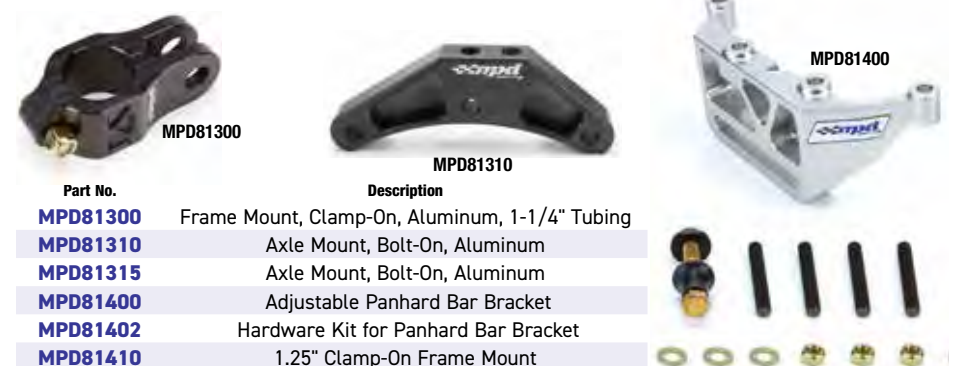


## FRONT SPRINT BRAKE KIT

Part No.	Description
Related Component	With Caliper, Brake Pads, Caliper Mounting Brackets, Caliper Mount Bolt Kit, Rotor, and Rotor Mounting Hardware
WIL140-14495	

## PANHARD BAR BRACKET

Panhard bar brackets are CNC machined from 6061-T6 aluminum. Lightweight and strong. Track tested.



Part No.	Description
MPD81300	Frame Mount, Clamp-On, Aluminum, 1-1/4" Tubing
MPD81310	Axle Mount, Bolt-On, Aluminum
MPD81315	Axle Mount, Bolt-On, Aluminum
MPD81400	Adjustable Panhard Bar Bracket
MPD81402	Hardware Kit for Panhard Bar Bracket
MPD81410	1.25" Clamp-On Frame Mount

# MIDGET REAR AXLE



## MIDGET BIRDCAGES

The MPD billet birdcages are made of billet 6061 aluminum. They come complete with split race angular contact bearings and hardware.

Part No.	Description
<b>MPD20100</b>	Left Rear
<b>MPD20101</b>	Right Rear
<b>Replacement Components</b>	
<b>MPD20110</b>	Flag for Right Rear Midget Birdcages
<b>MPD20111</b>	Flag for Left Rear Midget Birdcages
<b>MPD20112</b>	Stand-off Spud for Midget Birdcages
<b>MPD20115</b>	Bearing Spacer, 31-Spline, for Midget Birdcages
<b>MPD20120</b>	Midget Birdcage Bearing, Angular Contact



## MIDGET TORSION ARMS

State-of-the art torsion arm design saves weight and increases durability without sacrificing function. Made from 2024 aluminum. 2-3/8" offset Right 11' length. Straight Left 11" length. 33" setback.

Part No.	Description
<b>MPD20200</b>	33" Rear, Driver Side, Hardware Included
<b>MPD20202</b>	33.5" Left Rear, Hardware Included
<b>MPD20204</b>	33" Rear, Passenger Side, Hardware Included
<b>MPD20206</b>	33.5" Right Rear, Hardware Included

## MIDGET ALUMINUM TORSION STOP MPD27200

MPD stops are CNC-machined from 2024 aluminum and come complete with adjusting hardware. They are sized to fit 1" torsion bars. Black.



## MIDGET AXLE SPACERS - 31-SPLINE



Part No.	Description
<b>MPD87200-31</b>	Coned Midget Axle Spacer Kit with (2) 1/4" Spacers and (4) 1/2" Spacers, 31-Spline
<b>Extra Spacers for Kit</b>	
<b>MPD87201-31</b>	Male Cone - Sold Each
<b>MPD87202-31</b>	Female Cone - Sold Each
<b>MPD87009-31</b>	1/2" Thick - Sold Each
<b>MPD87015-31</b>	1/4" Thick - Sold Each

## MIDGET AXLE SPACERS - 36-SPLINE



Part No.	Description
<b>MPD87200-36</b>	Coned Midget Axle Spacer Kit with (2) 1/4" Spacers and (4) 1/2" Spacers, 36-Spline
<b>Extra Spacers for Kit</b>	
<b>MPD87201-36</b>	Male Cone - Sold Each
<b>MPD87202-36</b>	Female Cone - Sold Each
<b>MPD87009-36</b>	1/2" Thick - Sold Each
<b>MPD87015-36</b>	1/4" Thick - Sold Each



# MIDGET FRONT END



## MIDGET HUBS

These billet direct-mount hubs are machined from 6061-T6 aluminum for superior precision and strength. Kit includes left hub with rotor mount, right hub without rotor mount, bearings, seals, wheel nuts, and dust cap.

Part No.	Description
<b>MPD28500</b>	Complete Kit, Includes Right and Left Sides
<b>MPD28510</b>	Direct-Mount Billet Hub, Left Side Only, Complete
<b>MPD28512</b>	Direct-Mount Billet Hub, Right Side Only, Complete
<b>MPD28515</b>	Hub Bolt Kit, 3/8-16" Thread, 1.250" Long, Titanium
<b>MPD28528</b>	Hub Bolt Kit, 3/8-16" Thread, 1" Long, Steel

## MIDGET BILLET SPINDLES

MPD Midget spindles are produced from billet 2024-T3 aluminum and are offered with both steel and titanium shafts. They come complete with spindle lock nuts. Offered in 2 and 4 ear.

Part No.	Description
<b>MPD28400</b>	4 Ear, Steel Shaft, Black
<b>MPD28410</b>	4 Ear, Titanium Shaft, Black
<b>MPD28414</b>	2 Ear, Titanium Shaft, Black
<b>MPD28404</b>	2 Ear, Steel Shaft, Black
<b>MPD28440</b>	Nut, Keyed Washer / Screws Included



## MIDGET FRONT AXLE **MPD28100**

Midget front axles are 44" x 2" O.D. x 0.110" wall 4130 chromoly steel and have a black powder-coated finish.

## MIDGET STEERING ARMS

MPD steering arms are made of a high-quality billet aluminum. These arms work on all Midget steering applications and have 7/16"-20 threaded mounting holes.

Part No.	Description
<b>MPD28250</b>	Steering Arm, Black
<b>MPD28251</b>	Steering Arm, Natural
<b>MPD28260</b>	Wishbone Steering Arm, Black
<b>MPD28261</b>	Wishbone Steering Arm, Natural
<b>MPD28270</b>	Combo Steering Arm, Black
<b>MPD28271</b>	Combo Steering Arm, Natural



## RADIUS RODS

Aluminum rods are made from 6061 aluminum. 5/8"-18 thread. Black anodized. Sold each.

Part No.	Size	Part No.	Size	Part No.	Size	Part No.	Size
1" O.D.		1" O.D.		1" O.D.		1-1/8" O.D.	
<b>MPD41180</b>	18"	<b>MPD41220</b>	22"	<b>MPD41290</b>	29"	<b>MPD42390</b>	39"
<b>MPD41185</b>	18-1/2"	<b>MPD41225</b>	22-1/2"	<b>MPD41295</b>	29-1/2"	<b>MPD42410</b>	41"
<b>MPD41190</b>	19"	<b>MPD41230</b>	23"	<b>MPD41300</b>	30"		
<b>MPD41195</b>	19-1/2"	<b>MPD41235</b>	23-1/2"	<b>MPD41305</b>	30-1/2"		
<b>MPD41200</b>	20"	<b>MPD41240</b>	24"	<b>MPD41310</b>	31"		
<b>MPD41205</b>	20-1/2"	<b>MPD41245</b>	24-1/2"	<b>MPD41390</b>	39"		
<b>MPD41210</b>	21"	<b>MPD41250</b>	25"	<b>MPD41410</b>	41"		
<b>MPD41215</b>	21-1/2"						



## FRONT BRAKE MOUNTS

Aluminum front brake mounts are built for 10-1/8" rotors and come in a variety of styles.

Part No.	Description
<b>Front-Mounts</b>	
<b>MPD28300</b>	Brake Bracket, DMI-Style, Black
<b>MPD28315</b>	Brake Bracket, Winters-Style, Black
<b>Top-Mount</b>	
<b>MPD28310</b>	Brake Bracket, Top-Mount, DMI-Style, Black





MAXIMUM PERFORMANCE





**mpd**  
*racing*

ANCE DEVELOPMENT

# MIDGET FRONT END

## MIDGET KING PINS AND CAPS

MPD king pins are offered in both steel and titanium and come with the cap.

Part No.	Description
<b>MPD28450</b>	Midget King Pin, Steel, with Cap
<b>MPD28454</b>	Midget King Pin, Titanium, with Cap
<b>MPD28456</b>	Midget King Pin Cap, Aluminum
<b>MPD28460</b>	Midget King Pin Bushing, Brass, Natural, Set of 4



## HUB BEARING SPACER MPD13607

Bearing spacers feature a patented design that improves wheel spin by 1200% and reduces bearing maintenance and wear. Threaded adjustment makes setting end play or preload easy.

## LOW-DRAG SEALS MPD25605LD

Upgrade your performance with TFE low-drag seals.



MPD14203



MPD14201

MPD14202

## SPINDLE NUT & SHIM KITS

Part No.	Description
<b>MPD14201</b>	Sprint Spindle Thrust Bearing, Pack of 4
<b>MPD14202</b>	0.030" Thrust Washer, Pack of 4
<b>MPD14203</b>	King Pin Thrust Bearing, Roller, Steel, Kit
<b>MPD14204</b>	0.005" Shim, Pack of Ten
<b>MPD14205</b>	0.007" Shim, Pack of Ten
<b>MPD14206</b>	0.010" Shim, Pack of Ten
<b>MPD14207</b>	0.015" Shim, Pack of Ten





# MIDGET DRIVE LINES



## 4.45" TORQUE BALL HOUSING **MPD68200**

Machined from black anodized billet aircraft aluminum, these torque ball housings are the strongest torque ball housings on the market! It is the only housing on the market that pivots in the same linear pattern as the U-joint, letting your car drive harder and roll freer.

## TORQUE BALLS

MPD Torque Balls are machined out of solid aluminum billet and are hard anodized to keep from binding.

Part No.	Description	Weight	Matching Components
<b>MPD64201</b>	4.45" Ball Diameter 2.305" I.D. Long Ball	1.05 lbs.	MPD68200
<b>MPD64205</b>	4.45" Ball Diameter 2.995" I.D. Standard Ball	1.20 lbs.	MPD68200



## TORQUE TUBES

MPD Midget torque tube and collar assemblies are turned to 2.3" O.D. to allow 0.005" clearance for the torque ball. The torque collar has two six-hole patterns on a 4" bolt circle, with one set of holes for 5/16" studs and the other for 3/8" studs.

Part No.	Description	Weight
<b>MPD21600</b>	24" Torque Tube & Collar, 2.300" O.D.	4.00 lbs.
<b>MPD21602</b>	29" Torque Tube & Collar, 2.300" O.D.	6.85 lbs.
<b>MPD21610</b>	24" Torque Tube & Collar, 2.990" O.D.	4.60 lbs.

# MIDGET ACCESSORIES



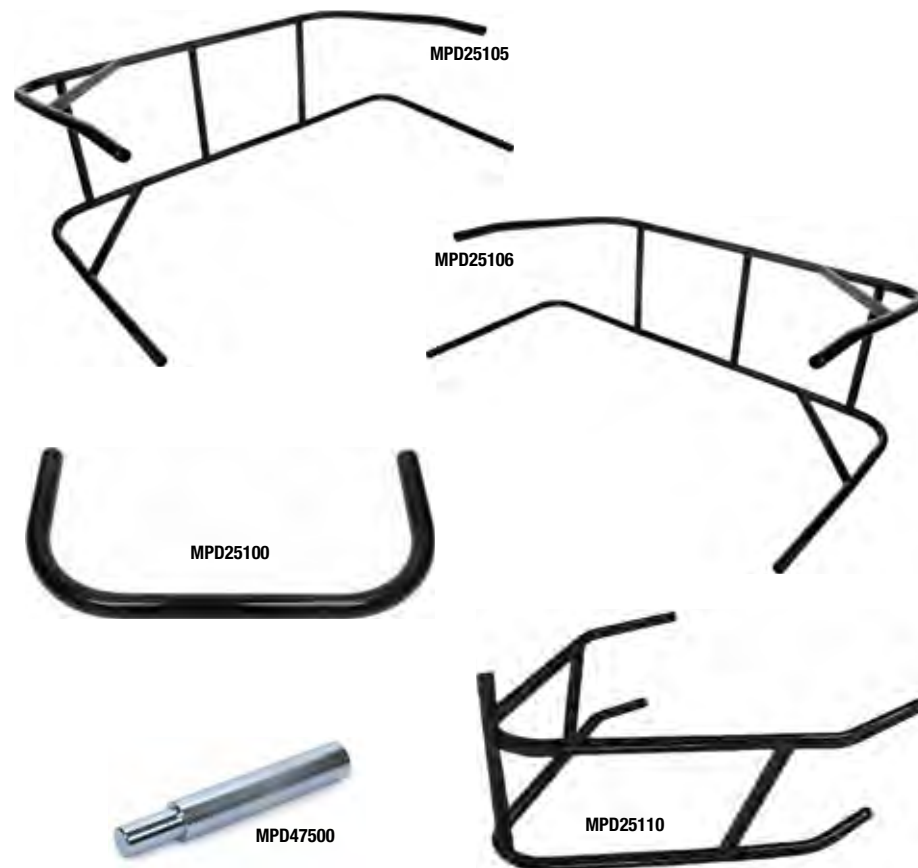
## MIDGET PEDALS

MPD pedals fit the most popular chassis and are made of high-quality materials.

Part No.	Description
<b>Throttle Pedals</b>	
<b>MPD20400</b>	For Midget Chassis
<b>MPD20408</b>	For Midget Chassis, Titanium
<b>Brake Pedals</b>	
<b>MPD20405</b>	For Midget Chassis, Titanium, 16-1/2" Length
<b>MPD20406</b>	For Midget Chassis

## MIDGET NERF BARS & BUMPERS

MPD nerfs and bumpers fit the most popular chassis and are made from strong 4130 chromoly steel with a durable black powder-coated finish.



Part No.	Description
<b>MPD25100</b>	Front Bumper, Black
<b>MPD25105</b>	Left Nerf, 4-Point, Black
<b>MPD25106</b>	Right Nerf, 4-Point, Black
<b>MPD25110</b>	Rear Bumper, Black
<b>MPD47500</b>	Nerf Bar Spud Repair Tool



# QUARTER MIDGET & KART



## QUARTER MIDGET AXLE BELT DRIVE SPROCKET HUBS

Hubs for the Quarter Midget Axle Belt Drive Sprockets.

Part No.	Description
<b>MPD69020</b>	1-1/4" Hub
<b>MPD69022</b>	1-3/8" Hub

## QUARTER MIDGET AXLE BELT DRIVE SPROCKET

Part No.	Description
<b>Axle Sprockets</b>	
<b>MPD69039</b>	39 Tooth
<b>MPD69040</b>	40 Tooth
<b>MPD69041</b>	41 Tooth
<b>MPD69042</b>	42 Tooth
<b>MPD69043</b>	43 Tooth
<b>MPD69044</b>	44 Tooth
<b>MPD69045</b>	45 Tooth
<b>MPD69046</b>	46 Tooth
<b>MPD69047</b>	47 Tooth
<b>MPD69048</b>	48 Tooth
<b>MPD69049</b>	49 Tooth
<b>MPD69050</b>	50 Tooth



## QUARTER MIDGET ENGINE SPROCKETS

Part No.	Description
<b>Engine Sprockets</b>	
<b>MPD69056</b>	56 Tooth
<b>MPD69058</b>	58 Tooth
<b>MPD69060</b>	60 Tooth



# ENGINE PARTS



## SPARK PLUG GUARD KIT

Don't let mud or rocks ruin your race. These lightweight aluminum spark plug guards have brackets that bolt to your headers with 2 quick-connect fasteners. Kit includes right and left guard, two front, and two rear mounting brackets.

Part No.

**MPD18001**

Description

Spark Plug Guard, Black  
Anodized Aluminum, Sprint Car, Kit  
Spark Plug Guard Brackets Only, 4-pack

**MPD18009**

## STEERING GEAR MOUNTS

MPD offers a variety of mounts to cover all the needs of installing steering gears and pumps.



MPD18820

MPD18900

Part No.

**MPD18820**

**MPD18900**

Description

Upper Power Steering Mount for Shut-Off Valve  
Power Steering Mount Adapter

## CAM SPUDS

Part No.

**MPD78500**

**MPD7870XL**

Description

9/16"-18 Thread, 1" Long

3/4"-16 x 1-1/8" Right-Hand Thread



## FUEL SHUT OFF **MPD76504**

Lightweight in-line shut-off valve has a -6AN inlet and outlet. Can be mounted anywhere between the fuel pump and the barrel valve.



## ADDITIONAL FUEL SHUT-OFF VALVES

Part No.

Description

### In-Line Fuel Shut-Off Valves

**MPD73800**

-12AN Male Outlet, Aluminum, for MPD Filter

**MPD73850**

-10AN, for MPD Filter



## FUEL BLOCK **MPD73900**

Each fuel block has one -8AN male outlet and three -6AN male inlets. Black anodized aluminum construction. This fuel block is designed with perfect angles to keep the plumbing lines clean and tight. Sold complete with fittings.



MPD72412

## IN-LINE FUEL FILTERS

Part No.

Description

**MPD72106**

30-Micron Stainless Element,  
-6AN Male Inlet, -6AN Male Outlet, Black Anodized Aluminum

**MPD72212**

100-Micron Stainless Element,  
-12AN Male Inlet, -12AN Male Outlet, Black Anodized Aluminum

**MPD72306**

30-Micron Stainless Element,  
-6AN Male Inlet, -6AN Male Outlet, Shut-Off Valve, Black Anodized Aluminum

**MPD72412**

100-Micron Stainless Element,  
-12AN Male Inlet, -12AN Male Outlet, Shut-Off Valve, Black Anodized Aluminum

## OIL FILTER ADAPTER, BLOCKOFF PLATE **MPD18200**

Designed for blocks that have a dry sump mount. Black anodized.





# TOOLS & ACCESSORIES



MPD18000

## TIRE BEAD BREAKERS

This is the BEST bead breaker made. This portable tool easily breaks down tires on aluminum and steel wheels.

Part No.	Description
<b>MPD18000</b>	15" Bead Breaker
<b>MPD23000</b>	13" Bead Breaker
<b>MPD53000</b>	10" Bead Breaker

## TORSION BAR CLEANING TOOL

Keep your torsion bars looking new. Perfect for every tool box. Black anodized.



MPD30010

Part No.	Description
<b>MPD30010</b>	3/4" Aluminum
<b>MPD30011</b>	7/8" Aluminum
<b>MPD30012</b>	1" Aluminum
<b>MPD30013</b>	1-1/8" Aluminum

## TORSION BAR BUSHING INSTALL TOOLS

Part No.	Description
<b>MPD30144</b>	7/8"
<b>MPD30142</b>	1"
<b>MPD30140</b>	1.125"



MPD30011  
MPD30012

## TORSION BAR REAMER MPD30130

Torsion Bar Reamer is manufactured for accuracy. The heart of the Reamer is its 4340 tool steel industrial cutter. Each flute is precision ground for perfect cutting and accuracy. The stem is made to come apart so it's easy to store. Machined at the handle end is a 3/4" hex so you can easily cut through your bushings.



## SPRINT CAR INNER REAR WHEEL COVER

This splined black anodized aluminum inner rear wheel cover fits a 15" diameter wheel. These slide-on splined inner mud covers prevent mud and debris from collecting in the inner wheel.

Part No.	Description
<b>MPD87300</b>	Right Cover
<b>MPD87302</b>	Left Cover



## BUMPER / NERF SPUD REPAIR TOOL **MPD47500**

Fits all Sprint Car 1" & Midget 7/8" bumper and nerf spuds. Simply drive the tool into the damaged or bent spud with a dead blow. Sold each.



## ALUMINUM WRENCH **MPD46006**

MPD Racing's anodized aluminum line wrench has a unique design to allow access in even those hard-to-reach areas. Machined with a 30° angle on one end and a 60° angle on the other, it gets where other wrenches can't. Fully radiused grips offer improved handling comfort. Made from 7075 aluminum, available in -6AN.



## 3/4" RADIUS ROD WRENCH **MPD46001**

MPD Racing's 3/4" radius rod wrench is the toughest and highest quality wrench you can buy at any price. Made from 7075 aluminum, this durable wrench is designed to last a lifetime.



# APPAREL

## MPD TRUCKER HAT MPD90400

Black and blue mesh snap-back hat.



## MPD HAT MPD90420

Black hat with velcro enclosure.



## KNIT BEANIE MPD90700

Tight woven acrylic knit. 8" tight-fitting cut. One size fits all. Black.



## MPD APPAREL

Size	Part No.
MPD Logo T-Shirt	
Small	MPD90100
Medium	
Large	
XL	
XXL	
When ordering a shirt, make sure to add size next to the part number. Example: MPD90100S	



Size	Part No.
MPD Logo T-Shirt Softstyle	
Small	MPD90110
Medium	
Large	
XL	
XXL	
When ordering a shirt, make sure to add size next to the part number. Example: MPD90110S	



Size	Part No.
MPD Logo Long-Sleeve T-Shirt Softstyle	
Small	MPD90112
Medium	
Large	
XL	
XXL	
When ordering a shirt, make sure to add size next to the part number. Example: MPD90112S	





# TERMS & CONDITIONS

## SHIPPING

Standard FedEx Ground/Home Delivery is available for orders with delivery addresses within the US and territories, excluding PO Boxes and Rural Routes. USPS shipping is available for orders with a PO Box, Rural Route, or APO/FPO/DPO address. Orders shipped to a PO Box or Rural Route will arrive within 7-10 business days and some items are too large to ship USPS.

## WARRANTY

MPD Racing warrants each product to be free from defects in both workmanship and materials for a period of ninety (90) days from the date of purchase. Product in question should either be returned to the dealer from which it was purchased, or shipped directly to MPD Racing along with proof of purchase and a complete description of the problem. The product must be returned freight pre-paid; COD's will not be accepted. No parts will be reviewed for inspection if modifications have been made. If, after factory inspection, the part is deemed to be defective, it will be replaced or a refund check will be issued.

## DISCLAIMER OF WARRANTY

MPD Racing makes no written, oral, expressed, or implied statement of warranty or guarantee on any product sold, other than for defects in materials or workmanship as stated previously. MPD Racing will not assume liability for personal or property damage resulting from the use or misuse of any product we manufacture or sell, whether on the street or on the race track. Purchase and/or use of these products implies recognition and acceptance of this entire warranty and disclaimer by customer.

## HOW DO I RETURN THE PRODUCT?

For fastest results, please click the CONTACT button on our website, [www.mpd racing.com](http://www.mpd racing.com). We will issue a Return Goods Authorization (RGA) number. Due to our high sales volume, no returns will be accepted without an RGA number. All returns must be unopened, undamaged, unused, uninstalled and complete with all parts, packing materials and instructions. A credit will be issued using the same payment method used for purchase within 5 business days after the product is returned and inspected.



**WARNING! CANCER AND REPRODUCTIVE HARM. [WWW.P65WARNINGS.CA.GOV/](http://WWW.P65WARNINGS.CA.GOV/)**

Some products in this catalog contain materials listed under California Proposition 65.  
For additional details on specific products, visit the MPD Racing website at [mpdracing.com](http://mpdracing.com).  
For additional information on Proposition 65, visit [www.p65warnings.ca.gov/](http://www.p65warnings.ca.gov/)

# NOTES

This image shows a single sheet of white paper with horizontal ruling lines. The lines are evenly spaced and run across the width of the page. There are no margins, text, or other markings on the paper.





MAXIMUM

PERFORMANCE

DEVELOPMENT



MPDRACING1  MPDRACING.COM  800.544.2773

8300 LANE DRIVE, WATERVLIET, MI 49098



MPD100

