

Impd
racing



2025



ST. HERRYK'S
EXHIBITOR WIPED

TEAM LINE

Impd

racing

NOS
ENERGY DRINK
SPRINT CARS

Dirtvision
HOOSIER



ATER



30 YEARS OF MAKING YOUR CAR FASTER THAN THE ONES BEHIND YOU

Founded over 30 years ago, MPD Racing was launched with one purpose: to develop and market the best possible components for Sprint and Midget racers. That vision of creating the best component manufacturing business in the USA remains the core of our mission today. Our continued focus on superior quality and performance, combined with unrivaled customer service, makes MPD Racing the brand of choice for Sprint and Midget race teams around the world.

Today, you can find our products at authorized distributors both across the US and abroad, as well as online at www.mpd racing.com



CONTENTS

4-11 *SPRINT CAR*

14-17 *ASPHALT*

18-25 *MIDGET*

26-27 *ENGINE*

28 *TOOLS*

30 *APPAREL*

SPEED CHASERS | TRACK RACERS | TROPHY TAKERS

SPRINT CAR TORSION BARS

Made of a high-quality 4340 steel alloy and heat treated to our exacting specifications, our torsion bars have won more Sprint Car championships than all other brands combined. Torsion bars feature 1-1/8" diameter x 48-spline ends, and may be ordered in diameters from 0.925" to 1.065", in both 29" and 30" lengths.

MANUFACTURED IN THE USA WITH ALL-AMERICAN MATERIALS.



NEW TORSION BAR REAMER

MPD30130

Torsion Bar Reamer, 1.125" Taper for Sprint Car Bar.



Part No.	Diameter
30" TORSION BAR WITH 23" EFFECTIVE LENGTH	
MPD300925	0.925"
MPD300950	0.950"
MPD300975	0.975"
MPD300987	0.987"
MPD301000	1.000"
MPD301015	1.015"
MPD301025	1.025"
MPD301035	1.035"
MPD301050	1.050"
MPD301065	1.065"

Part No.	Diameter
29" TORSION BAR WITH 23" EFFECTIVE LENGTH	
MPD290925	0.925"
MPD290950	0.950"
MPD290975	0.975"
MPD291000	1.000"
MPD291025	1.025"
MPD291050	1.050"
MPD291065	1.065"

SPRINT CAR TORSION BAR BUSHING INSTALLER

MPD30140

This tool makes installing torsion bar bushings quick and easy. A must for every toolbox, it also helps prevent bending or cracking the bushing flange during installation.



TORSION BAR BUSHINGS

Torsion bushings are 1-1/8" I.D. 0.095" thick performance tested anti-friction material offers increased wear-resistance allowing for longer part life.

Part No.	Description
MPD30104	Torsion Bar Bushing 0.095" Sprint Car—Nylon (4-Pack)
MPD30110	Torsion Bar Bushing 0.095" Sprint Car—Nylon (10-Pack)
MPD30204	Torsion Bar Bushing 0.095" Sprint Car—Bronze (4-Pack)
MPD30210	Torsion Bar Bushing 0.095" Sprint Car—Bronze (10-Pack)

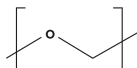


BRONZE
MPD30210



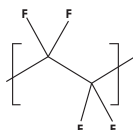
NYLON
MPD30110

NYLON BUSHING FEATURES:



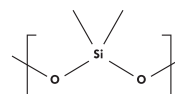
POLYOXYMETHYLENE

Less Friction
Properties Remain Constant with Humidity
High Impact Strength



POLYTETRAFLUOROETHYLENE

Improves Abrasion Resistance
Improves Lubrication



POLYSILOXANE

Improves Weatherability
Improves Thermal Stability

SPRINT TORSION BAR RETAINERS

Natural aluminum retainers are engineered specifically for use with MPD Racing 1-1/8" diameter torsion bars, and feature cadmium-plated Grade 8 bolts. Torsion bar retainers are made of black anodized aluminum.

Part No.	Description
MPD30001	Torsion Bar Retainers, Sold in Pairs
MPD30002	Torsion Bar Retaining Caps for 1-1/8" Threaded Bar, Sold in Pairs



MPD30001



MPD30002

SPRINT CAR

TORSION BARS

MINI-SPRINT TORSION BARS

Manufactured from the same high-grade alloy steel as the Sprint Car bars, MPD Racing 26" torsion bars are 7/8" diameter x 48-spline. With lightweight hollow construction, torsion bars are available from 0.600" to

0.800" diameter in 26" lengths to provide a range of options for effective wheel rates. Each bar is packaged in a protective tube at no extra charge.



Part No.	Diameter	
MPD26600	0.600"	7/8" x 48-Spline
MPD26625	0.625"	7/8" x 48-Spline
MPD26650	0.650"	7/8" x 48-Spline
MPD26675	0.675"	7/8" x 48-Spline

Part No.	Diameter	
MPD26700	0.700"	7/8" x 48-Spline
MPD26712	0.712"	7/8" x 48-Spline
MPD26725	0.725"	7/8" x 48-Spline
MPD26737	0.737"	7/8" x 48-Spline

Part No.	Diameter	
MPD26750	0.750"	7/8" x 48-Spline
MPD26775	0.775"	7/8" x 48-Spline
MPD26800	0.800"	7/8" x 48-Spline

STORAGE TUBE

The same tube used to protect MPD torsion bars during storage or transport may also be purchased separately. Protective tube is 1-1/2" diameter x 16-3/4" long, weighs 0.2 lbs



MPD99700



MPD30020

TORSION BAR SPLINE GREASE

Designed to provide top-quality protection for torsion bars and Sprint Car drive lines. It utilizes a high-viscosity synthetic base, proprietary anti-wear additive, and Polyurea thickener that is specifically developed to extend durability.



STOCK CAR FRONT SWAY BARS

CNC-machined from aircraft-quality alloy steel for improved memory and consistency. MPD Racing gun-drilled sway bars offer significant weight savings without negatively impacting performance. The center diameter is made larger so the bar will have the same spring rate as a solid bar, ensuring that no chassis adjustments are necessary when switching from solid to gun-drilled bars. Bars are heat treated, and then polished to remove surface imperfections. Sway Bars are 37.5" long and shipped in a special locking tube for storage and protection.



Part No.	Description
MPD375100	1" Diameter, 37-1/2" Long, 48-Spline
MPD375125	1-1/4" Diameter, 37-1/2" Long, 48-Spline
MPD375150	1-1/2" Diameter, 37-1/2" Long, 48-Spline

SPRINT CAR DRIVE LINE

TORQUE BALL HOUSING

MPD68200

Machined from black anodized billet aircraft aluminum, these 4.45" torque ball housings are the strongest torque ball housings on the market! It is the only housing on the market that pivots in the same linear pattern as the U-joint, letting your car drive harder and roll freer.



MPD64205

MPD64202

TORQUE BALLS

MPD Torque Balls are machined out of solid aluminum billet and are hard anodized to keep from binding.

Part No.	Description	Matching Components
MPD64202	4.45" Ball Diameter 2.995" I.D. Long Ball	MPD68200
MPD64203	4.45" Ball Diameter 3.005" I.D. Standard Ball	MPD68200
MPD64205	4.45" Ball Diameter 2.995" I.D. Standard Ball	MPD68200

ALUMINUM TORQUE TUBES

MPD anodized aluminum torque tubes are turned to 2.990" O.D. and reamed to 2.628" I.D. to ensure 0.005" clearance between the torque ball and torque tube. Tubes are available in 27", 28", 32", and 35" lengths. The torque collars have been lightened with a ball mill to decrease weight. All torque tube assemblies are supplied with an O-ring.

Part No.	Description	Matching Components
MPD64628	Torque Tube, Black, 28"	MPD64205, MPD64202
MPD64632	Torque Tube, Black, 32"	MPD64205, MPD64202
MPD64635	Torque Tube, Black, 35"	MPD64205, MPD64202
MPD64650	Torque Tube HD, Long Collar, Black, 28"	MPD64205, MPD64202
MPD64601	Torque Tube, Black, 27", 3" O.D.	MPD64203



MPD64628

28" STEEL TUBULAR DRIVESHAFT

MPD65104

Made with tough 4130 steel, then gun drilled to reduce weight, MPD Racing tubular driveshafts feature 10-spline and 16-spline ends.



SPRINT CAR

DRIVE LINE

SHIFT LEVERS

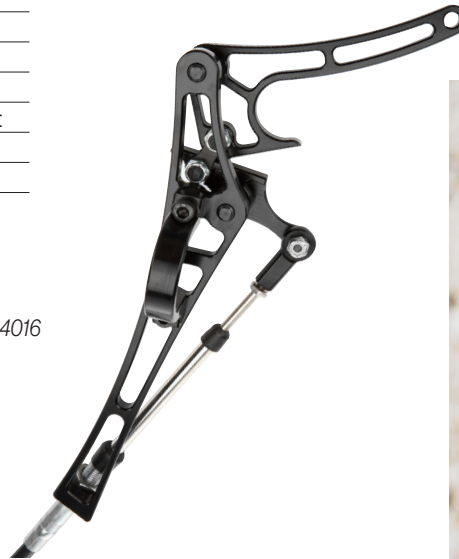
Our lightweight shift levers have a positive lock system to securely lock the car into gear. Spring-loaded lever locks into place in either the "in" or "out" position. The black anodized shift lever is offered in both a weld-on or clamp-on style.

Part No.	Description
MPD84000	Shift Lever—Weld-On
MPD84000C	Shift Lever—Clamp-On
MPD84010	Clamp for Push-Lock Shifter Cable
MPD84001	Shifter Installation Kit, Weld-On Bracket
MPD84015	Shifter Installation Kit, Cable Tab / Weld-On Bracket
MPD84016	Complete Camlock Shifter Assembly
MPD84020	Cable, Complete with Ends and Ready to Install



MPD84000

MPD84016



SPRINT CAR AXLE SPACER KIT

MPD Racing's axle spacer system uses a split cone spacer which allows moving the wheel in or out without going back to look for the right size spacer. Once the spacing is correct, simply move the existing spacers from the inside of the wheel to the center of the split cone or vice versa. Kit includes male cone for the wheel center and female cone for the wheel nut, (2) 1/4" and (4) 1/2" spacers. Some cars may require an additional spacer between the system and the birdcage. Black anodized aluminum. Made in the USA.

Part No.	Description
MPD87200	Coned Sprint Car Axle Spacer Kit, (2) 1/4" Spacers and (4) 1/2" Spacers
Extra Spacers for Kit	
MPD87201	Male Cone—Sold Each
MPD87202	Female Cone—Sold Each
MPD87203	Male/Female Kit
MPD87009	1/2" Wide—Sold Each
MPD87015	1/4" Wide—Sold Each
MPD87007	7/8" Wide, Tapered—Sold Each
MPD87008	7/8" Wide, 42-Spline—Sold Each



MPD87200



MPD87007

MPD87203

MPD87008

NEW SPRINT CAR INNER REAR WHEEL COVER

This splined black anodized aluminum inner rear wheel cover fits a 15" diameter wheel.

Part No.	Description
MPD87300	Right Cover
MPD87302	Left Cover



NEW REAR AXLE NUT

Black anodized aluminum rear axle nuts for sprint cars.

Part No.	Description
MPD85001	Left-Hand Thread
MPD85002	Right-Hand Thread



SPRINT CAR TETHERS

SPRINT CAR FRONT AXLE TETHER SYSTEM

Approved for use by Knoxville Raceway and the WoO (World of Outlaws), front axle tether system adds a measure of safety to open wheel racing in the event of front axle breakage. Clamps install easily to front axle, and tethers are then connected to the front motor mount tube. Kits include (2) billet clamps, (2) tethers, and required hardware. Tether, clamp, and hardware kits are also available separately for replacement purposes, or for spare front axles.

Part No.	Description
MPD10500	Axle Tether Pair with 2.5" Clamps
MPD10501	Axle Tether Pair with 2.38" Clamps
MPD10502	Axle Tether Pair with 2.25" Clamps
MPD10525	Axle Clamp Pair 2.5" with Hardware
MPD10526	Axle Clamp Pair 2.38" with Hardware
MPD10527	Axle Clamp Pair 2.25" with Hardware
MPD10528	Axle Clamp Hardware Only



MPD10500



MPD10525



MPD10526



MPD10527



MPD10507



MPD10506



MPD10508

KING PIN TETHER KIT

King pin tether from MPD Racing is required by World of Outlaws and many other Sprint Car sanctioning bodies and tracks. It attaches to the king pins so that they will remain with the race car in the event of a crash.

Part No.	Description
MPD10510	King Pin Studs Pair
MPD10506	For 50" Axle, King Pin Tether with Hardware
MPD10507	For 51"-53" Axle, King Pin Tether with Hardware
MPD10508	NEW 56" King Pin Tether with Hardware



MPD10510

SPRINT CAR

FRONT END



MPD28500

LIGHTWEIGHT SPRINT HUBS

These billet direct-mount hubs are machined from 6061-T6 aluminum for superior precision and strength. Kit includes left hub with rotor mount, right hub without rotor mount, bearings, seals, wheel nuts, and dust cap.

Part No.	Description
MPD28500	Complete Kit, Includes Right and Left Sides
MPD28510	Direct-Mount Billet Hub, Left Side Only, Complete
MPD28512	Direct-Mount Billet Hub, Right Side Only, Complete

SPRINT SPINDLES

Sprint car spindles are manufactured using a 7075-T6 aluminum forging and are offered with titanium or steel snout and include lock nuts.

Part No.	Description
MPD14000	Spindle with Steel Snout, 2 Ear
MPD14007	Spindle with Steel Snout, 4°, 2 Ear
MPD14010	Spindle with Titanium Snout, 2 Ear

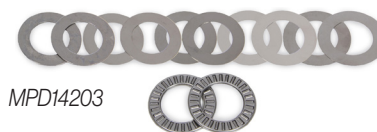


MPD14000

MPD14010

SPINDLE NUT & SHIM KITS

Part No.	Description
MPD14201	Sprint Spindle Thrust Bearing, Pack of 4
MPD14202	0.030" Thrust Washer, Pack of 4
MPD14203	King Pin Thrust Bearing, Roller, Steel, Kit
MPD14204	0.005" Shim, Pack of 10
MPD14205	0.007" Shim, Pack of 10
MPD14206	0.010" Shim, Pack of 10
MPD14207	0.015" Shim, Pack of 10



MPD14203

HUB BEARING SPACER

[MPD13607](#)

Bearing spacers feature a patented design that improves wheel spin by 1200% and reduces bearing maintenance and wear. Threaded adjustment makes setting end play or preload easy.



LOW-DRAG SEALS

[MPD25605LD](#)

Upgrade your performance with TFE low-drag seals.



SPINDLE REPLACEMENT PARTS

Part No.	Description
MPD14001	King Pin, 5/8", Steel
MPD14011	King Pin, 5/8", Titanium
MPD14305	Steel Spindle Nut, Keyed Washer / Screws Included



MPD14001

SPRINT CAR COMPONENTS

SPRINT CAR BIRDCAGES

These black anodized billet aluminum birdcages are complete with angular contact bearing, torsion arm bolt, and radius rod bolt. 5-1/4" split between radius rod and torsion arm. Left and right sold individually.

Part No.	Description
MPD81107	Right Side, 2.750" I.D. Bearing, Single Bearing, Aluminum
MPD81207	Left Side, 2.750" I.D. Bearing, Single Bearing, Aluminum

Replacement Parts

MPD81101	Birdcage Flag, Aluminum, Black Anodized
MPD81102	Birdcage Spud, Aluminum
MPD81103	Birdcage Bolt, Lower Arm, 1/2"-20 Thread, 4" Long, Hex Head, Steel
MPD81104	Birdcage Bolt, Radius Rod Bolt, 1/2"-20 Thread, 3-1/4" Long, Hex Head, Steel



SPRINT CAR STEERING ARMS

Steering arms are CNC-machined from 202 aluminum. Black anodized finish. Sold each.

Part No.	Description
MPD17708	Left Front Combo Arm, 8-3/16" Center to Center, Aluminum
MPD17608	Right Front Single Mount, 5-1/2" Center to Center



PITMAN ARMS

MPD offers a variety of different styles of Pitman arms to make sure you get the correct feel of the race car.

Part No.	Description
MPD28340	Pitman Arm, Straight, Black, 10" and 11" holes
MPD28345	Pitman Arm, Angle Broach, Black, 10" and 11" holes
MPD28360	Pitman Arm, Straight, Long, Black, 11.25", 12.25", 13.25", and 14.25" Holes
MPD28365	Pitman Arm, Angle Broach, Long, Black, 11.25", 12.25", 13.25", and 14.25" Holes

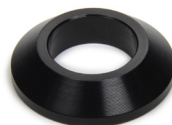


CONE SPACERS

Part No.	Description	Weight
MPD41000	Cone Spacer Plain	0.01 lbs
MPD41002	Cone Spacer Black	0.01 lbs
MPD41005	Cone Spacer, Set of 10, Plain	
MPD41006	Cone Spacer, Set of 10, Black	



MPD41000



MPD41002

FRONT ROTOR MOUNTING KITS

Front rotor mounting kits include 3 stands with bolts. Stands have 1/2"-20 threads through and include 1/2"-20 flathead Allen bolts.

Part No.	Description	Weight
MPD1790K	Front Brake Rotor Mounting Kit, One Per Hub	0.29 lbs



SPRINT CAR COMPONENTS

SPRINT CAR TORSION ARMS

MPD torsion arms are constructed of high-strength 2024 aluminum. The arms have been precisely radiused to reduce excess weight while maintaining strength and durability. The left S-Bend allows for more oversteer clearance on the left front tire.

Part No.	Description
MPD82000	Left Front, 1-1/8" x 48 Spline, 19-1/2" Long
MPD82004	Left Front, S-Bend, 1-1/8" x 48 Spline, 19-1/4" Long
MPD82006	Right Front, 1-1/8" x 48 Spline, 17-1/2" Long
MPD82010	Left Rear, 1-1/8" x 48 Spline, 16-1/4" Long
MPD82014	Right Rear Torsion Arm, 1-1/8" x 48 Spline, 15-3/8" Long



MPD82000



MPD82014



MPD82004

TORSION BAR STOPS

Torsion stops are available in 1-3/4" split. Aluminum stops are made from 6061 aluminum and include a steel bolt and jam nut. Steel stops are 4340 steel and include a steel bolt and jam nut. Titanium stops feature a titanium bolt with aluminum jam nut.

Part No.	Description
MPD17200	1-3/4" Split, Hardware Included, Aluminum, Black Anodized
MPD17210	1-3/4" Split, Hardware Included, Steel, Black Powder Coat
MPD17212	1-3/4" Split, Hardware Included, Titanium, Natural
TORSION STOP BOLT	
MPD17220	7/16"-20" Thread, 1.750" Long, Hex Head, Steel
MPD17222	7/16"-20" Thread, 1.750" Long, Hex Head, Titanium



MPD17210

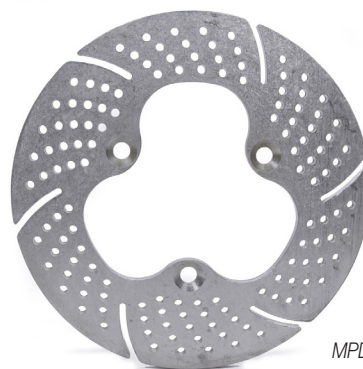


MPD17222

BRAKE ROTORS

All rotors have been drilled and lightened to significantly reduce rotating weight. Rotors are 3/8" thick and are made of 6061-T651 tooling plate. Each rotor is clear anodized to increase durability and extend usable life.

Part No.	Description
MPD17900	Aluminum Brake Rotor—11"
MPD17904	Aluminum Brake Rotor—10"



MPD17900

SPRINT DRIVE STUDS FOR FRONT HUBS

[MPD12300](#)

Threaded drive stud, with 5/8"-11 thread on pin and 1/2"-20 thread on shank. Fits bolt-on front hubs.

MPD12300



PAVEMENT HUB LUG NUT

[MPD12400](#)

Aluminum lug nut with 5/8"-11 thread. Sold in packs of three.



MPD12400

MASTER CYLINDER RETURN SPRING

[MPD17990](#)

Kit includes black anodized aluminum retainer and black powder-coated steel spring.

Helps driver from burning the brakes and helps prevent excess heat from brake drag.



MPD17990





SPEED CHASERS
TRACK RACERS
TROPHY TAKERS



Pro **Performance**

ASPHALT SPRINT CAR



**NEW 6-PIN ORIGINAL HUBS
ARE BACK!
MPD13000**

REPLACEMENT PARTS

DRIVE STUDS FOR FRONT HUBS

MPD12300



ASPHALT HUB LUG NUT

MPD12400



FRONT ROTOR MOUNTING KIT

MPD1790K



NEW 6-PIN PRESSURE PLATE

Part No.	Description
MPD16400	Plain
MPD16401	Black



ASPHALT BILLET HUBS

Our asphalt hub is precision machined from 6061-T6 aluminum. It features a direct-mount floating rotor with all the hardware included. Comes complete with aluminum lug nuts, wheel bearings, and seals. Uses step-style spindle.

Part No.	Description
MPD17000	Direct Mount, 6 Pin, Bearings, Aluminum, Black Anodized, Sprint, Each
Replacement Parts	
MPD17010	Wheel Stud, Replacement, 5/8"-11 Right Hand Thread, 2-1/2" Long, Steel
MPD17012	Wheel Stud, Replacement, 5/8"-11 Right Hand Thread, 2-1/2" Long, Titanium
MPD17015	Lug Nut, 5/8" Right Hand Thread, Aluminum, Natural, Set of 3



MPD17000

ASPHALT

SPRINT CAR

ASPHALT BRAKE CALIPERS

Designed for superior braking power. CNC machined and assembled with the finest available materials. Radial mount provides the ability to get maximum brake pad contact. Strong and lightweight, they are black anodized for excellent appearance.

Part No.	Description
MPD17100	4-Piston, Driver Side, Aluminum, Black Anodized, 1.250" Thick Rotor, 7-7/8" Solid Mount
MPD17101	4-Piston, Passenger Side, Aluminum, Black Anodized, 1.250" Thick Rotor, 7-7/8" Solid Mount
MPD17930	Brake Pads, Semi-Metallic, MPD Radial Caliper

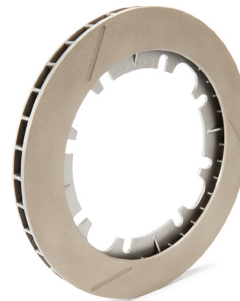


MPD17100

ASPHALT BRAKE ROTORS

Ceramic coated for unmatched cooling. Floating design eliminates vibration while providing extended rotor life. Lightweight and strong. Unmatched quality.

Part No.	Description
MPD17920	11.75" O.D., 0.810" Thick, 8 x 7.000" Bolt Pattern, Chromoly
MPD17925	11.75" O.D., 0.810" Thick, 8 x 7.000" Bolt Pattern, Titanium
Additional Parts	
MPD17028	Brake Rotor Adapter, 6 Pin to 8 x 7.000" Rotor Bolt Pattern, Aluminum



MPD17925

NEW FRONT BRAKE MOUNT

[MPD14152](#)

Pavement 4" on 5-1/4"



MPD17008

ASPHALT BRAKE PARTS

Part No.	Description
MPD17008	Brake Rotor Bolt, 1/4"-20 Thread, 1.000" Long, Allen Head, T-Nuts / Flanged Hex Nuts Included, Titanium, Set of 14
MPD17030	Brake Caliper Bracket, Front, Radial Mount, Aluminum, Natural Anodized



PANHARD BAR BRACKET

Panhard bar brackets are CNC machined from 6061-T6 aluminum. Lightweight and strong. Track tested.

Part No.	Description
MPD81300	Frame Mount, Clamp-On, Aluminum, 1-1/4" Tubing
MPD81310	Axle Mount, Bolt-On, Aluminum
MPD81315	Axle Mount, Bolt-On, Aluminum
MPD81400	NEW Adjustable Panhard Bar Bracket
MPD81402	NEW Hardware Kit for Panhard Bar Bracket

ASPHALT SPRINT CAR

ASPHALT SPRINT CAR BIRDCAGES

This state-of-art sprint card birdcage is designed with strength in mind, but still emphasizes weight savings. The 7075 billet aluminum birdcage needs no bolt-on hardware, giving it maximum strength. These cages fit most asphalt cars including beast and hurricane chassis.

Part No.	Description
MPD81120	Left Hand Birdcage
MPD81220	Right Hand Birdcage



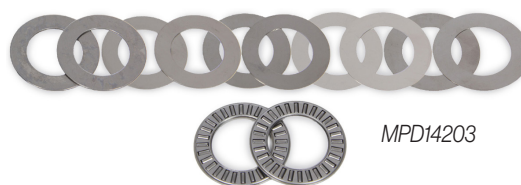
MPD81120



MPD81220

SPINDLE NUT & SHIM KITS

Part No.	Description
MPD14201	Sprint Spindle Thrust Bearing, Pack of 4
MPD14202	0.030" Thrust Washer, Pack of 4
MPD14203	King Pin Thrust Bearing, Roller, Steel, Kit
MPD14204	0.005" Shim, Pack of 10
MPD14205	0.007" Shim, Pack of 10
MPD14206	0.010" Shim, Pack of 10
MPD14207	0.015" Shim, Pack of 10



MPD14203



ASPHALT AXLE

2.25" outside diameter, 12 degree front spindles.

Part No.	Description
MPD17300	50" Front Axle Assembly
MPD17302	52" Front Axle Assembly

ASPHALT SPRINT CAR



ASPHALT SPINDLE

Asphalt spindles are manufactured using a 7075-T6 aluminum forging and have stepped steel snouts. Lock nuts included.

Part No.	Description
MPD14100	Black Spindle
MPD14101	NEW Natural Anodized Spindle

ASPHALT SPRINT CAR STEERING ARMS

The MPD Racing sprint steering arms are machined from 2024 aluminum, drilled and tapped 1/2" NF for mounting. Available in multiple configurations. Black anodized finish.

Part No.	Description	Weight	Spindle Bolt Center	A	B	C	D
MPD14130	Steering Arm, Left	15.5 oz.	3.75"	N/A	N/A	5.5" - 6.125"	1.375"
MPD14132 NEW	(Single Mount), LF Single	14 oz.	3.75"	N/A	N/A	6"	1.375"
MPD14135	Steering Arm, Right	1lb. 7 oz.	3.75"	1"	5.5" - 6.25"	5.375" - 6.25"	1.75"
MPD14137 NEW	(Single Mount), RF Combo	1lb. 12 oz.	3.75"	0.375"	6.5"	6.25"	1.375"



MPD14130



MPD14132



MPD14137

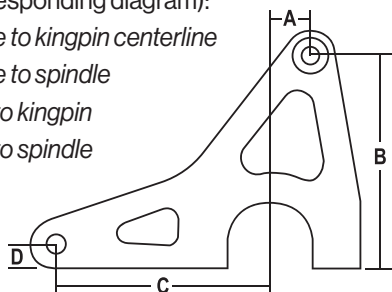


MPD14135

STEERING ARM MEASUREMENT GUIDELINES

Please follow these guidelines for providing correct steering arm dimensions (see corresponding diagram):

- A. Drag-link centerline to kingpin centerline
- B. Drag-link centerline to spindle
- C. Tie-rod centerline to kingpin
- D. Tie-rod centerline to spindle



MIDGET

REAR AXLE

MIDGET BIRDCAGES

The MPD billet birdcages are made of billet 6061 aluminum. They come complete with split race angular contact bearings and hardware.

Part No.	Description
MPD20100	Left Rear Birdcage
MPD20101	Right Rear Birdcage
Replacement Parts	
MPD20110	Flag for Right Rear Midget Birdcages
MPD20111	Flag for Left Rear Midget Birdcages
MPD20112	Stand-off Spud for Midget Birdcages
MPD20115	Bearing Spacer, 31-Spline, for Midget Birdcages
MPD20120	Midget Birdcage Bearing, Angular Contact



MPD20100

MIDGET TORSION ARMS

State-of-the art torsion arm design saves weight and increases durability without sacrificing function. Made from 2024 aluminum. 2-3/8" offset Right 11" length. Straight Left 11" length. 33" setback.

Part No.	Description
MPD20200	Left Rear, Hardware Included, Aluminum
MPD20204	Right Rear, Hardware Included, Aluminum

MPD20200



MPD20204

MIDGET AXLE SPACERS - 31-SPLINE

Part No.	Description
MPD87200-31	Coned Midget Axle Spacer Kit with (2) 1/4" Spacers and (4) 1/2" Spacers, 31-Spline
Extra Spacers for Kit	
MPD87201-31	Male Cone—Sold Each
MPD87202-31	Female Cone—Sold Each
MPD87009-31	1/2" Thick—Sold Each
MPD87015-31	1/4" Thick—Sold Each



MPD87200-31

MIDGET AXLE SPACERS - 36-SPLINE

Part No.	Description
MPD87200-36	Coned Midget Axle Spacer Kit with (2) 1/4" Spacers and (4) 1/2" Spacers, 36-Spline
Extra Spacers for Kit	
MPD87201-36	Male Cone—Sold Each
MPD87202-36	Female Cone—Sold Each
MPD87009-36	1/2" Thick—Sold Each
MPD87015-36	1/4" Thick—Sold Each



MPD87200-36

MIDGET TORSION STOP IN ALUMINUM

MPD stops are CNC-machined from 2024 aluminum and come complete with adjusting hardware. They are sized to fit 1" torsion bars.

Part No.	Description
MPD27200	Torsion Stop for Midget, Aluminum, Black



MIDGET SPINDLES

MPD Midget spindles are produced from billet 2024-T3 aluminum and are offered with both steel and titanium shafts. They come complete with spindle lock nuts. Offered in 2 and 4 ear.

Part No.	Description
MPD28400	Midget Billet Spindle, 4 Ear, Steel Shaft, Black
MPD28410	Midget Billet Spindle, 4 Ear, Titanium Shaft, Black
MPD28414	Midget Billet Spindle, 2 Ear, Titanium Shaft, Black
MPD28404	Midget Billet Spindle, 2 Ear, Steel Shaft, Black
MPD28440	Midget Spindle Nut, Keyed Washer / Screws Included

MIDGET KING PINS AND CAPS

MPD king pins are offered in both steel and titanium and come with the cap.

Part No.	Description
MPD28450	Midget King Pin, Steel, with Cap
MPD28454	Midget King Pin, Titanium, with Cap
MPD28456	Midget King Pin Cap, Aluminum
MPD28460	Midget King Pin Bushing, Brass, Natural, Set of 4

MIDGET HUBS

These billet direct-mount hubs are machined from 6061-T6 aluminum for superior precision and strength. Kit includes left hub with rotor mount, right hub without rotor mount, bearings, seals, wheel nuts, and dust cap.

Part No.	Description
MPD28500	Complete Kit, Includes Right and Left Sides
MPD28510	Direct-Mount Billet Hub, Left Side Only, Complete
MPD28512	Direct-Mount Billet Hub, Right Side Only, Complete
MPD28515	Hub Bolt Kit, 3/8-16" Thread, 1.250" Long, Titanium
MPD28528	Hub Bolt Kit, 3/8-16" Thread, 1" Long, Steel

HUB BEARING SPACER

[MPD13607](#)

Bearing spacers feature a patented design that improves wheel spin by 1200% and reduces bearing maintenance and wear. Threaded adjustment makes setting end play or preload easy.



MPD28500



MIDGET FRONT AXLE

Midget front axles are 44" x 2" x 0.110" wall 4130 chromoly steel and have a black powder-coated finish.

Part No.	Description
MPD28100	Front Axle for Midget 44" x 2" O.D. x 0.110" Wall



LOW-DRAG SEALS

[MPD25605LD](#)

Upgrade your performance with TFE low-drag seals.



MIDGET

FRONT END

MPD28400





For more than 30 years we at MPD have taken great pride in establishing our products as second to none in the industry. When John Bickford started this business, it was because he wanted his son (Jeff Gordon) to have the best.

From those early track-side days, MPD Racing Inc. was born. Our goal was to build the best component manufacturing company in the US. We source our materials right here in America and pride ourselves on superior customer service. We put our name and reputation on everything we do.

Today, you can find our products at authorized distributors across the US who appreciate and share the importance of customer service.

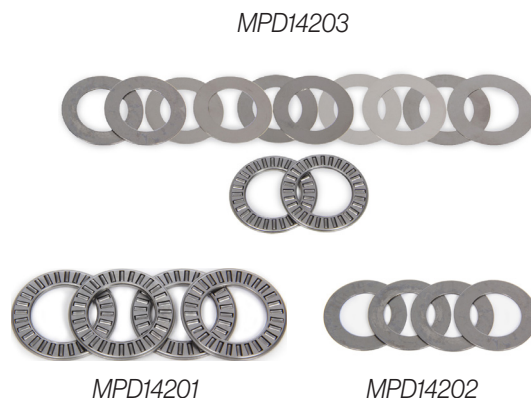
mpd
racing

MIDGET

FRONT END

SPINDLE NUT & SHIM KITS

Part No.	Description
MPD14201	Sprint Spindle Thrust Bearing, Pack of 4
MPD14202	0.030" Thrust Washer, Pack of 4
MPD14203	King Pin Thrust Bearing, Roller, Steel, Kit
MPD14204	0.005" Shim, Pack of Ten
MPD14205	0.007" Shim, Pack of Ten
MPD14206	0.010" Shim, Pack of Ten
MPD14207	0.015" Shim, Pack of Ten



MIDGET STEERING ARMS

MPD steering arms are made of a high-quality billet aluminum. These arms work on all Midget steering applications and have 7/16"-20 threaded mounting holes.

Part No.	Description
MPD28250	Steering Arm for Midget, Black
MPD28251	Steering Arm for Midget, Natural
MPD28260	Wishbone Steering Arm for Midget, Black
MPD28261	Wishbone Steering Arm for Midget, Natural
MPD28270	Combo Steering Arm for Midget, Black
MPD28271	Combo Steering Arm for Midget, Natural



MPD FRONT BRAKE MOUNTS

Aluminum front brake mounts are built for 10-1/8" rotors and come in a variety of styles.

Part No.	Description
MPD28300	Brake Bracket, Front-Mount, DMI-Style, Black
MPD28310	Brake Bracket, Top-Mount, DMI-Style, Black
MPD28315	Brake Bracket, Front-Mount, Winters-Style, Black



MPD41200

RADIUS RODS

Aluminum rods are made from 6061 aluminum. 5/8"-18 thread. Black anodized. Sold each.

Part No.	Description	Part No.	Description
1" O.D.		MPD41240	24"
MPD41180	18"	MPD41245	24-1/2"
MPD41185	18-1/2"	MPD41250	25"
MPD41190	19"	MPD41290	29"
MPD41195	19-1/2"	MPD41295	29-1/2"
MPD41200	20"	MPD41300	30"
MPD41205	20-1/2"	MPD41305	30-1/2"
MPD41210	21"	MPD41310	31"
MPD41215	21-1/2"	MPD41390	39"
MPD41220	22"	MPD41410	41"
MPD41225	22-1/2"	1-1/8" O.D.	
MPD41230	23"	MPD42390	39"
MPD41235	23-1/2"	MPD42410	41"

MIDGET DRIVE LINES

4.45" TORQUE BALL HOUSING

MPD68200

Machined from black anodized billet aircraft aluminum, these torque ball housings are the strongest torque ball housings on the market! It is the only housing on the market that pivots in the same linear pattern as the U-joint, letting your car drive harder and roll freer.



TORQUE BALLS

MPD Torque Balls are machined out of solid aluminum billet and are hard anodized to keep from binding.

Part No.	Description	Weight	Matching Components
MPD64201	4.45" Ball Diameter 2.305" I.D. Long Ball	1.05 lbs.	MPD68200
MPD64205	4.45" Ball Diameter 2.995" I.D. Standard Ball	1.20 lbs.	MPD68200

TORQUE TUBES

MPD Midget torque tube and collar assemblies are turned to 2.3" O.D. to allow 0.005" clearance for the torque ball. The torque collar has two six-hole patterns on a 4" bolt circle, with one set of holes for 5/16" studs and the other for 3/8" studs.

Part No.	Description	Wt.
MPD21600	24" Torque Tube & Collar, 2.300" O.D.	4.00 lbs.
MPD21602 NEW	29" Torque Tube & Collar, 2.300" O.D.	6.85 lbs.
MPD21610	24" Torque Tube & Collar, 2.990" O.D.	4.60 lbs.



MPD64205



MPD64201



MPD21600



MPD21602



MPD21610

MIDGET ACCESSORIES



MPD20400

MPD20406

MIDGET PEDALS

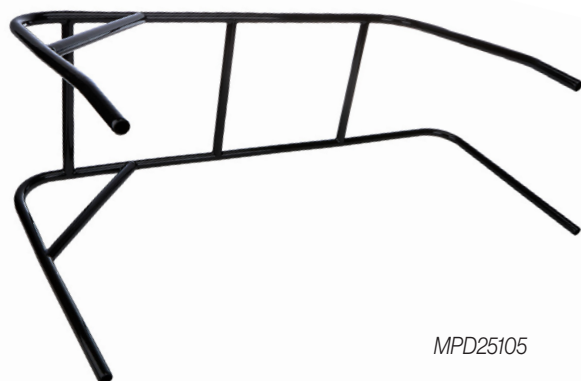
MPD pedals fit the most popular chassis and are made of high-quality materials.

Part No.	Description
MPD20400	Throttle Pedal for Midget Chassis
MPD20406	Brake Pedal for Midget Chassis

MIDGET NERF BARS & BUMPERS

MPD nerfs and bumpers fit the most popular chassis and are made from strong 4130 chromoly steel with a durable black powder-coated finish.

Part No.	Description
MPD25100	Midget Front Bumper, Black
MPD25105	Midget Left Nerf, 4-Point, Black
MPD25106	Midget Right Nerf, 4-Point, Black
MPD25110	Midget Rear Bumper, Black
MPD47500	Nerf Bar Spud Repair Tool



MPD25105



MPD25106



MPD25100



MPD25110

QUARTER MIDGET & KART

NEW QUARTER MIDGET AXLE BELT DRIVE SPROCKET HUBS

Hubs for the New Quarter Midget Axle
Belt Drive Sprockets.

Part No.	Description
MPD69020	1-1/4" Hub
MPD29022	1-3/8" Hub



NEW QUARTER MIDGET AXLE BELT DRIVE SPROCKET



Part No.	Description
MPD69039	39 Tooth
MPD69040	40 Tooth
MPD69041	41 Tooth
MPD69042	42 Tooth
MPD69043	43 Tooth
MPD69044	44 Tooth
MPD69045	45 Tooth
MPD69046	46 Tooth
MPD69047	47 Tooth
MPD69048	48 Tooth
MPD69049	49 Tooth
MPD69050	50 Tooth
MPD69056	56 Tooth
MPD69058	58 Tooth
MPD69060	60 Tooth

ENGINE PARTS



SPARK PLUG GUARD KIT

Don't let mud or rocks ruin your race. These lightweight aluminum spark plug guards have brackets that bolt to your headers with 2 quick-connect fasteners. Kit includes right and left guard, two front, and two rear mounting brackets.

Part No.	Description
MPD18001	Spark Plug Guard, Black Anodized Aluminum, Sprint Car, Kit
MPD18009	Spark Plug Guard Brackets Only, 4-pack

OIL FILTER ADAPTER, BLOCKOFF PLATE

[MPD18200](#)

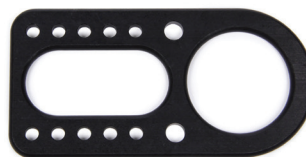
Designed for blocks that have a dry sump mount. Black anodized.



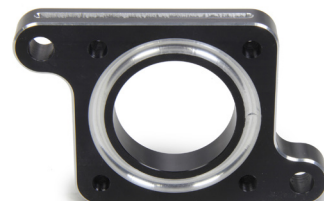
STEERING GEAR AND PUMP MOUNTS

MPD offers a variety of mounts to cover all the needs of installing steering gears and pumps.

Part No.	Description
MPD18800	Power Steering Mount
MPD18800M	Power Steering Mount, Mag
MPD18820	Upper Power Steering Mount for Shut-Off Valve
MPD18840	Upper Power Steering Mount for Shut-Off Valve, Side-Mount
MPD18900	Power Steering Mount Adapter



MPD18800



MPD18900

CAM DRIVE SEALS

MPD cam seal plates are machined from only the finest billet aluminum material available. The outer diameter is precisely machined for a perfect press-fit for any engine block.

Part No.	Description
MPD78900	Cam Drive Housing, Black, Donovan/Steel, 2.105" O.D.
MPD78800	Cam Drive Housing, Red, Rodeck, 2.090" O.D.
Replacement Part	
MPD78700	Replacement Seal Only



MPD78800

FUEL SHUT OFF

MPD76504

Lightweight in-line shut-off valve has a -6AN inlet and outlet. Can be mounted anywhere between the fuel pump and the barrel valve.



ADDITIONAL FUEL SHUT-OFF VALVES

Part No.	Description
MPD73800	In-Line Fuel Shut-Off Valve, -12AN Male Outlet, Aluminum, for MPD Filter
MPD73850	In-Line Fuel Shut-Off Valve #10, for MPD Filter



MPD73800



MPD73850



FUEL BLOCK

MPD73900

Each fuel block has one -8AN male outlet and three -6AN male inlets. Black anodized aluminum construction. This fuel block is designed with perfect angles to keep the plumbing lines clean and tight. Sold complete with fittings.



FUEL FILTERS

Part No.	Description
MPD72106	In-Line Fuel Filter, 30-Micron Stainless Element, -6AN Male Inlet, -6AN Male Outlet, Black Anodized Aluminum
MPD72212	In-Line Fuel Filter, 100-Micron Stainless Element, -12AN Male Inlet, -12AN Male Outlet, Black Anodized Aluminum
MPD72306	In-Line Fuel Filter, 30-Micron Stainless Element, -6AN Male Inlet, -6AN Male Outlet, Shut-Off Valve, Black Anodized Aluminum
MPD72412	In-Line Fuel Filter, 100-Micron Stainless Element, -12AN Male Inlet, -12AN Male Outlet, Shut-Off Valve, Black Anodized Aluminum



MPD72106



MPD72306



MPD72412



MPD72212

TOOLS & ACCESSORIES

TIRE BEAD BREAKERS

This is the BEST bead breaker made. This portable tool easily breaks down tires on aluminum & steel wheels.

Part No.	Description
MPD18000	15" Bead Breaker
MPD23000	13" Bead Breaker
MPD53000	10" Bead Breaker

TORSION BAR CLEANING TOOL

Keep your torsion bars looking new. Perfect for every tool box.

Part No.	Description
MPD30010	3/4" Aluminum, Black Anodized
MPD30011	7/8" Aluminum, Black Anodized
MPD30012	1" Aluminum, Black Anodized
MPD30013	1-1/8" Aluminum, Black Anodized

NEW SPRINT CAR INNER REAR WHEEL COVER

This splined black anodized aluminum inner rear wheel cover fits a 15" diameter wheel.

Part No.	Description
MPD87300	Right Cover
MPD87302	Left Cover

NEW TORSION BAR REAMER

[MPD30130](#)

Torsion Bar Reamer, 1.125" Taper for Sprint Car Bar.

BUMPER / NERF SPUD REPAIR TOOL

[MPD47500](#)

Fits all Sprint Car 1" & Midget 7/8" bumper and nerf spuds. Simply drive the tool into the damaged or bent spud with a dead blow. Sold each

ALUMINUM WRENCH

[MPD46006](#)

MPD Racing's anodized aluminum line wrench has a unique design to allow access in even those hard-to-reach areas. Machined with a 30° angle on one end and a 60° angle on the other, it gets where other wrenches can't. Fully radiused grips offer improved handling comfort. Made with 7075 aluminum, available in 6AN.

3/4" RADIUS ROD WRENCH

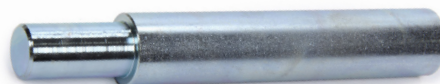
[MPD46001](#)


MPD Racing's 3/4" radius rod wrench is the toughest and highest quality wrench you can buy at any price. Made from 7075 aluminum, this durable wrench is designed to last a lifetime.

MPD18000



MPD30010





A close-up photograph of a motorcycle's rear section. The main focus is a black fairing with a silver logo that reads "Empd racing". The logo features a stylized checkered flag on the left, followed by the word "Empd" in a bold, sans-serif font, and "racing" in a smaller, cursive script below it. To the right of the fairing, a silver shock absorber is visible, with a silver bolt at the top. The background is dark and out of focus, showing parts of the motorcycle's frame and a glimpse of a light-colored surface.

APPAREL

MPD TRUCKER HAT

MPD90400

Black and blue mesh snap-back hat.



MPD HAT

MPD90420

Black hat with velcro enclosure.



KNIT BEANIE

MPD90700

Tight woven acrylic knit. 8" tight-fitting cut. One size fits all. Black.



MPD APPAREL

Part No.	Description
MPD90110	MPD Logo T-Shirt Softstyle, 100% Ring Spun Cotton, Sizes S-2XL
MPD90112	MPD Logo Long-Sleeve T-Shirt Softstyle, 100% Ring-Spun Cotton, Sizes S-2XL
MPD90300	MPD Sport-Tek Hoodie, Sizes S-2XL



MPD90110



MPD90300



MPD90112



TERMS & CONDITIONS

SHIPPING

Standard FedEx Ground/Home Delivery is available for orders with delivery addresses within the US and territories, excluding PO Boxes and Rural Routes. USPS shipping is available for orders with a PO Box, Rural Route, or APO/FPO/DPO address. Orders shipped to a PO Box or Rural Route will arrive within 7-10 business days and some items are too large to ship USPS.

WARRANTY

MPD Racing warrants each new product to be free from defects in both workmanship and materials for a period of ninety (90) days from the date of purchase. Product in question should either be returned to the dealer from which it was purchased, or shipped directly to MPD Racing along with proof of purchase and a complete description of the problem. The product must be returned freight pre-paid; COD's will not be accepted. No parts will be reviewed for inspection if modifications have been made. If, after factory inspection, the part is deemed to be defective, it will be replaced or a refund check will be issued.

DISCLAIMER OF WARRANTY

MPD Racing makes no written, oral, expressed, or implied statement of warranty or guarantee on any product sold, other than for defects in materials or workmanship as stated previously. MPD Racing will not assume liability for personal or property damage resulting from the use or misuse of any product we manufacture or sell, whether on the street or on the race track. Purchase and/or use of these products implies recognition and acceptance of this entire warranty and disclaimer by customer.

HOW DO I RETURN THE PRODUCT?

For fastest results, please click the CONTACT button on our website, www.mpd racing.com. We will issue a Return Goods Authorization (RGA) number. Due to our high sales volume, no returns will be accepted without an RGA number. All returns must be unopened, undamaged, unused, uninstalled and complete with all parts, packing materials and instructions. A credit will be issued using the same payment method used for purchase within 5 business days after the product is returned and inspected.



WARNING! CANCER AND REPRODUCTIVE HARM. WWW.P65WARNINGS.CA.GOV/

Some products in this catalog contain materials listed under California Proposition 65. For additional details on specific products, visit the MPD Racing website at mpdracing.com.



Dunlop
racing

MOTION



This image shows a single sheet of white paper with horizontal ruling lines. The lines are evenly spaced and run across the width of the page. There are no margins, text, or other markings on the paper.



8300 Lane Drive
Watervliet, MI 49098
Phone 800-544-2773
www.mpd racing.com



MPD100

